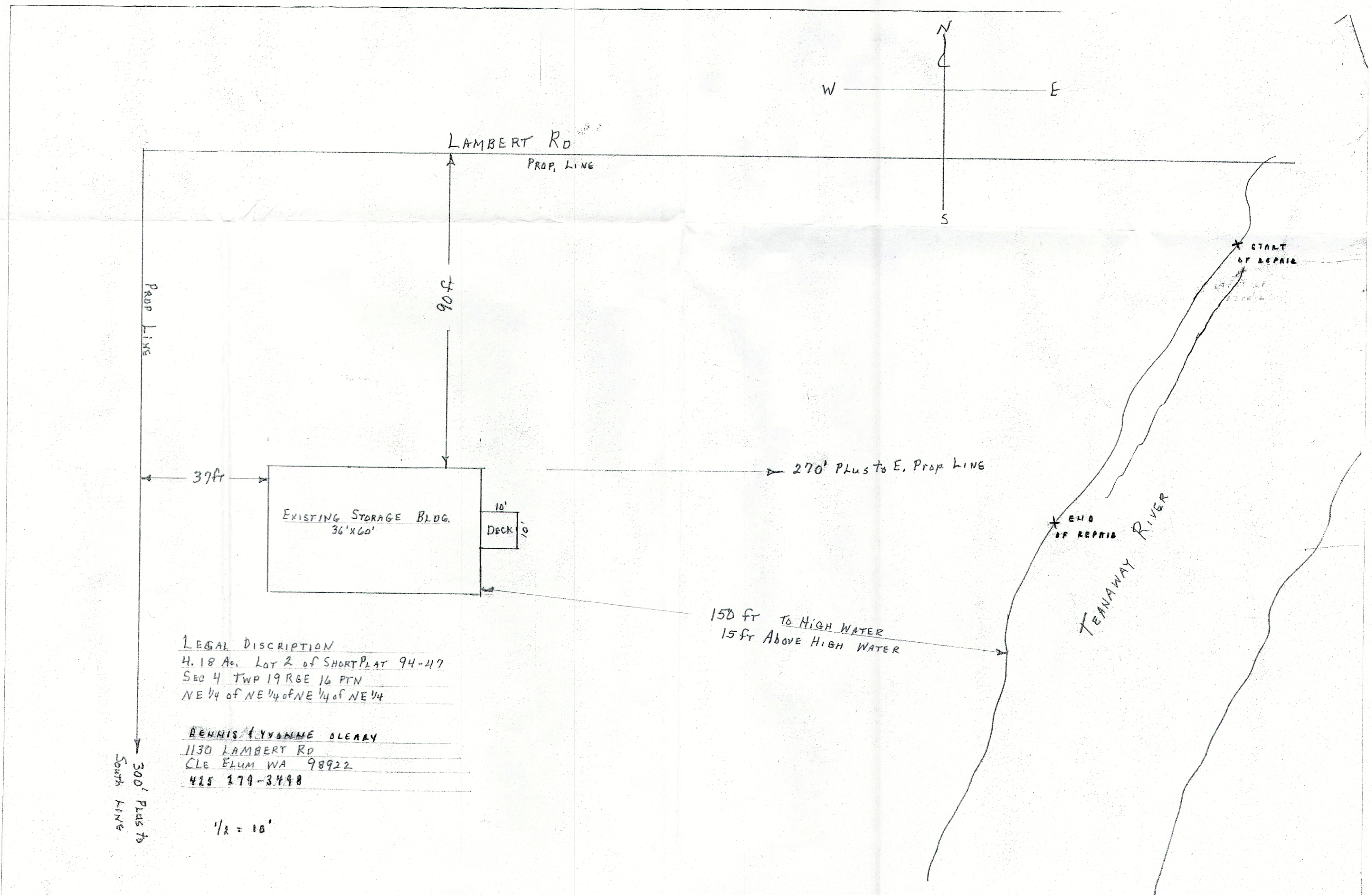


RECEIVED

MAY 19 2016
KITITIS COUNTY
CDS



LEGAL DISCRPTION
4.18 Ac. LOT 2 of SHORT PLAT 94-417
SEC 4 TWP 19 RGE 16 PTN
NE 1/4 of NE 1/4 of NE 1/4 of NE 1/4

DENNIS & YVONNE OLEARY
1130 LAMBERT RD
CLE ELUM WA 98922
425 279-3498

1/2" = 10'